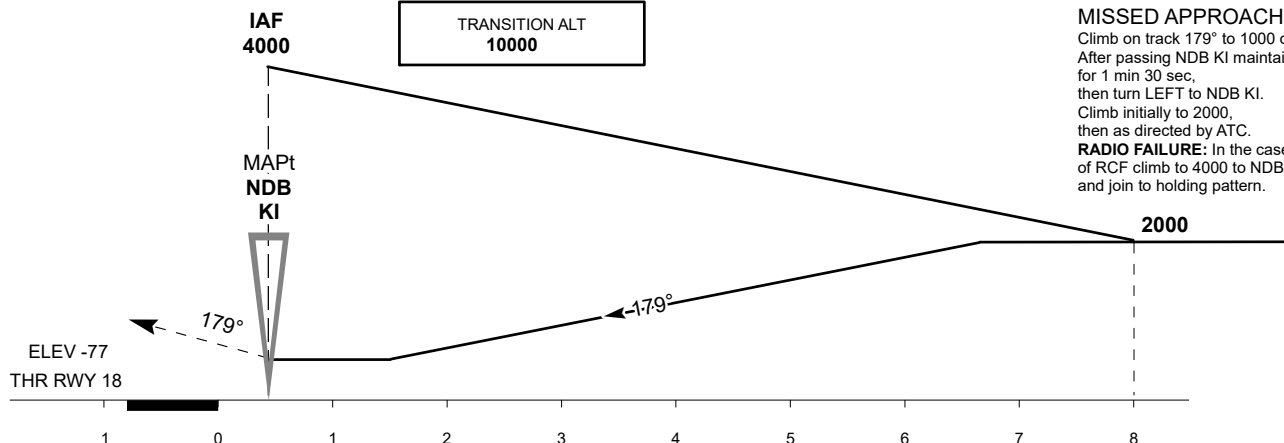
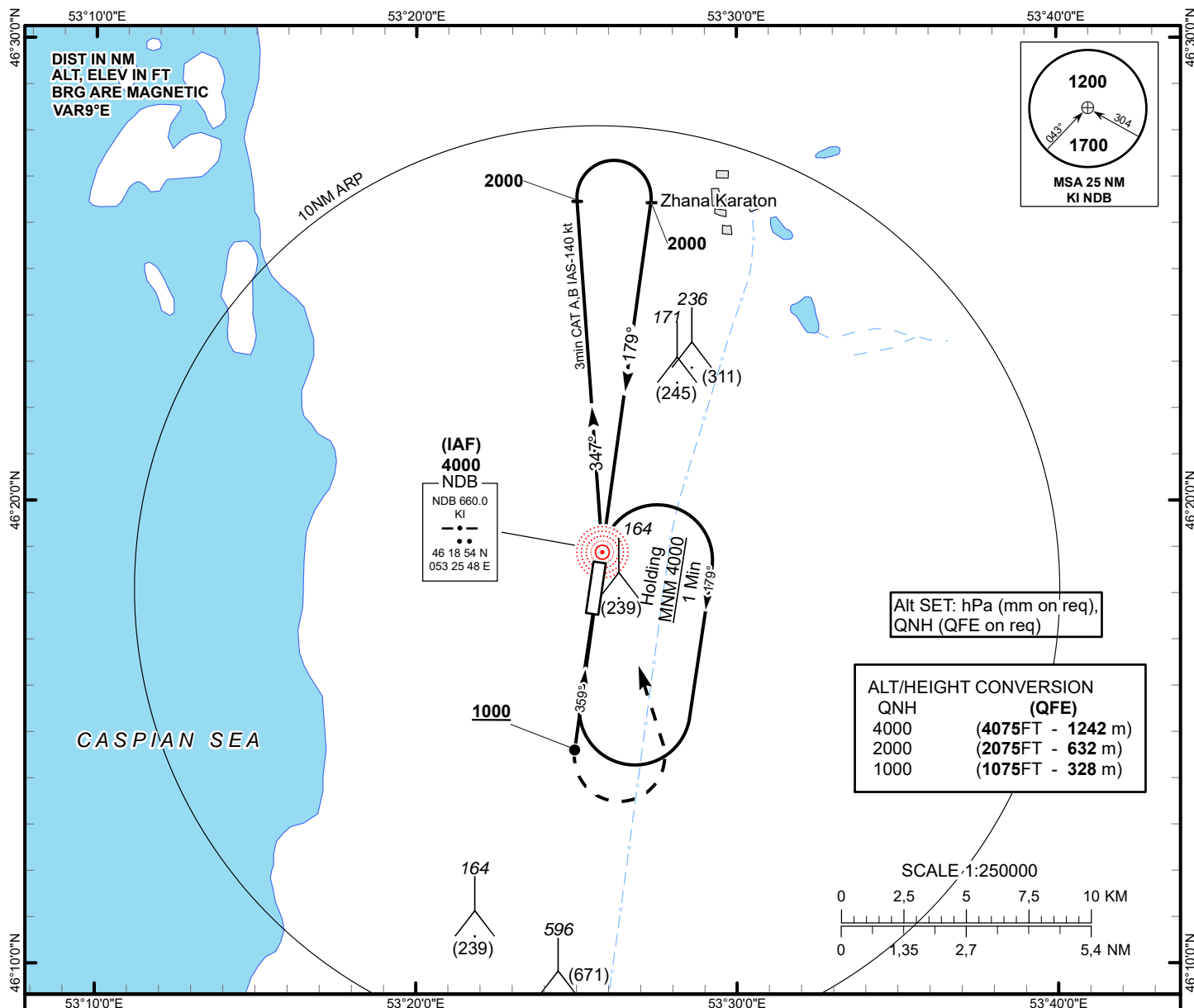


INSTRUMENT  
APPROACH  
CHART - ICAO

AERODROME ELEV -75FT  
HEIGHTS RELATED TO  
AD ELEV

TENGIZ TOWER 119.2

TENGIZ  
NDB  
RWY 18



**MISSED APPROACH**  
Climb on track 179° to 1000 or above.  
After passing NDB KI maintain 179°  
for 1 min 30 sec,  
then turn LEFT to NDB KI.  
Climb initially to 2000,  
then as directed by ATC.  
**RADIO FAILURE:** In the case  
of RCF climb to 4000 to NDB KI  
and join to holding pattern.

CHANGE: Direction; Revised.

Aircraft Category		A	B	C	D
Straight-in Approach OCA/H	NDB	410(480)	410(480)		
Aerodrome Operating Minima MDH ft x RVR(CMV)	NDB				

TENGIZ (UATZ)  
NDB RWY18

AERONAUTICAL DATA TABULATION

NDB approach to RWY18 from KI NDB	
Fix/point	Coordinates
KI NDB (IAF)	46° 18' 54.1"N 053° 25' 48.1"E
THR RWY18	46° 18' 29.01"N 053° 25' 43.11"E